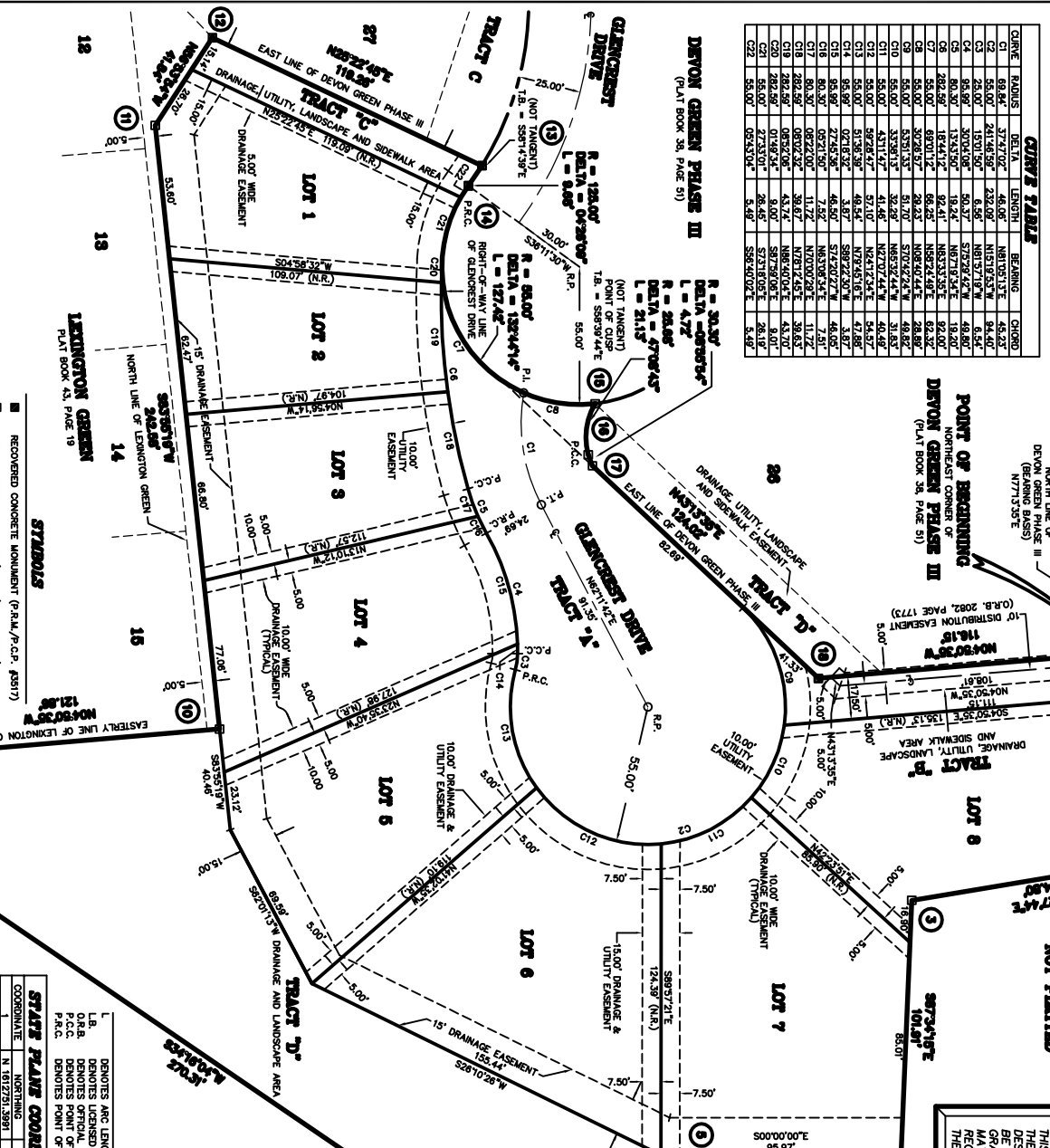


# DEVON GREEN PHASE IV

A replat of a portion of DEVON GREEN PHASE III, as recorded in Plat Book 36, Page 61 of the Public Records of Seminole County, Florida, and a parcel of land lying in a portion of Section 12, Township 20 South, Range 29 East, Seminole County, Florida.

**CURVE TABLE**

CURVE	RADIUS	DELTA	LENGTH	BEARING	CHORD
C1	69.84'	37.2102°	46.06'	N81.00131°E	44.23'
C2	55.00'	241.4658°	232.00'	N151.9353°W	6.54'
C3	28.00'	130.9150°	6.95'	N87.57197°W	6.54'
C4	65.88'	330.9198°	50.37'	S73.92427°W	48.89'
C5	482.88'	184.4172°	32.41'	N83.33382°E	32.00'
C6	55.00'	80.0112°	86.25'	N89.24497°E	82.32'
C7	55.00'	30.2857°	29.23'	N08.40242°E	28.89'
C8	55.00'	53.9135°	31.70'	S70.42224°W	48.82'
C9	55.00'	33.9115°	32.28'	N65.32444°W	31.85'
C10	55.00'	58.2647°	37.00'	N42.12444°E	34.82'
C11	55.00'	51.3639°	48.54'	N72.61616°E	47.86'
C12	55.00'	92.1632°	3.87'	S89.22507°W	3.87'
C13	65.88'	92.1632°	3.87'	S89.22507°W	3.87'
C14	65.88'	92.1632°	3.87'	S89.22507°W	3.87'
C15	65.88'	92.1632°	3.87'	S89.22507°W	3.87'
C16	65.88'	92.1632°	3.87'	S89.22507°W	3.87'
C17	65.88'	92.1632°	3.87'	S89.22507°W	3.87'
C18	482.88'	08.0242°	39.67'	N102.12487°E	39.65'
C19	482.88'	08.0242°	39.67'	N102.12487°E	39.65'
C20	482.88'	08.0242°	39.67'	N102.12487°E	39.65'
C21	482.88'	08.0242°	39.67'	N102.12487°E	39.65'
C22	55.00'	27.7310°	28.45'	S71.18105°E	28.19'
C23	55.00'	06.5310°	3.48'	S88.50102°E	3.48'



**PLAT BOOK PAGE**

**GRAPHIC SCALE**  
1 Inch = 30 Ft.

**NOTICE**  
THIS PLAT, AS RECORDED IN ITS GRAPHIC FORM, IS THE OFFICIAL DERIVATION OF THE SUBDIVIDED LANDS DESCRIBED HEREIN AND WILL IN NO CIRCUMSTANCES BE SUPPLANTED IN AUTHORITY BY ANY OTHER GRAPHIC OR DIGITAL FORM OF THE PLAT. THERE MAY BE ADDITIONAL RESTRICTIONS THAT ARE NOT RECORDED IN THIS PLAT. ANY SUCH RESTRICTIONS WILL BE FOUND IN THE PUBLIC RECORDS OF THIS COUNTY.

**Tinklepaugh SURVEYING SERVICES, INC.**  
379 W. Michigan Street, Suite 208 • Orlando, Florida 32806  
Talk. No. (407) 482-0897 Fax No. (407) 482-8815  
LICENSED BUSINESS No. 5779

- SYMBOLS**
- RECOVERED CONCRETE MONUMENT (P.R.M./P.C.P. #3517)
  - SET CONCRETE MONUMENT (P.R.M./P.C.P. #3778)
  - SET NAIL AND CAP (P.R.M./P.C.P. #3778)
  - SET 1/2" IRON PIPE AND CAP (L.B.3778)
  - ⊕ DENOTES CHANGE IN DIRECTION (NO MONUMENT SET)
  - ⊙ DENOTES CENTERLINE
  - Ⓢ DENOTES STATE PLANE COORDINATE NUMBER

**ABBREVIATIONS**

L.B. DENOTES ARC LENGTH  
O.R.B. DENOTES LICENSED BUSINESS  
P.C.P. DENOTES OFFICIAL RECORDS BOOK PLAT NUMBER  
P.R.M. DENOTES POINT OF BEGINNING CURVATURE  
T.B. DENOTES TANGENT BEARING

P.T. DENOTES POINT OF TANGENCY  
N.A. DENOTES NOT RADIAL  
R.P. DENOTES RADIIUS POINT  
T.B. DENOTES TANGENT BEARING

**STATE PLANE COORDINATES**

COORDINATE	NORTHING	EASTING	COORDINATE	NORTHING	EASTING
1	N 1612751.3891	E 538904.5278	10	N 1612386.3064	E 538939.0502
2	N 1612716.4351	E 538988.8041	11	N 1612370.5319	E 538982.7814
3	N 1612713.0353	E 539071.0355	12	N 1612353.5380	E 538982.7814
4	N 1612580.4428	E 539108.0533	13	N 1612456.5267	E 538971.2025
5	N 1612580.4428	E 539118.4507	14	N 1612456.5144	E 538968.8610
6	N 1612500.4181	E 539144.3792	15	N 1612543.9539	E 538929.2154
7	N 1612716.8455	E 538992.4405	16	N 1612543.9539	E 538929.2154
8	N 1612716.8455	E 538992.4405	17	N 1612543.9539	E 538929.2154
9	N 1612716.8455	E 538992.4405	18	N 1612543.9539	E 538929.2154

