



1275 Lake Heathrow Lane  
 Heathrow, FL 32746  
 407-333-1400  
 www.HeathrowRealty.com



Heathrow Realty Sales Center



Beautiful Wildlife



Heathrow Country Club Kids Camp



Heathrow's 24-hour Manned Gate



2000 single family homes, estate homes, condos, and villas located on 1,900 acre site with an abundance of lakes, lush landscaping, and mature trees.  
 Price range from 300's to 3 million+

Location

14 miles north of downtown Orlando & 1/2 mile west of I-4 (Lake Mary/ Heathrow, Exit 98) in Seminole County.

Heathrow Country Club

- ~ Exclusive private country club with banquet hall
- ~ Ron Garl designed 18 hole championship course
- ~ Clubhouse with main dining room outside patio, bar, and lounge
- ~ Men's and women's card room and lounge
- ~ Weekly member dining and social events

Heathrow Racquet Club

- ~ New fitness center with state-of-the art equipment
- ~ Olympic pool, sauna and jacuzzi, and seasonal lifeguard
- ~ 11 lighted tennis courts with tennis pro shop
- ~ Pool side snack bar and juice bar
- ~ Private and group lessons and tennis leagues for all levels

Sawyer Lake Park

- ~ Lighted volleyball & basketball courts
- ~ Playground and shaded pavilions
- ~ Canoe launching area and fishing dock
- ~ Soccer and softball field
- ~ Miles of walking/jogging paths

Colonial Town Park out the north gate of Heathrow is a unique village-like retail development with fine dining and upscale shopping that has become the most exciting retail destination in Seminole County. Colonial Center adjacent to Heathrow is considered one of the premier office parks in Florida.

This 370-acre master planned business park includes offices, hotels, commercial development.



# Burlington Oaks Heathrow Premier Listing



1677 Kersley Circle

Offered at \$719,000

Presented By Michelle O'Callaghan (407) 221-4745  
 www.HeathrowRealty.com



Large Screened Patio with Pool & Spa



Formal Dining Room



Lake View from the balcony

Property Facts  
Bedrooms/Baths - 4/4  
Heated Square Feet - 3,696  
Year Built - 2004  
Monthly HOA - \$167.00

Room Dimensions  
Living Room - 16 x 13  
Family Room - 22 x 16  
Kitchen - 19 x 16  
Master Suite - 24 x 16  
Second Bedroom - 12 x 12  
Third Bedroom - 12 x 12  
Fourth Bedroom - 12 x 12  
Bonus Room - 17 x 16  
Den - 15 X 11

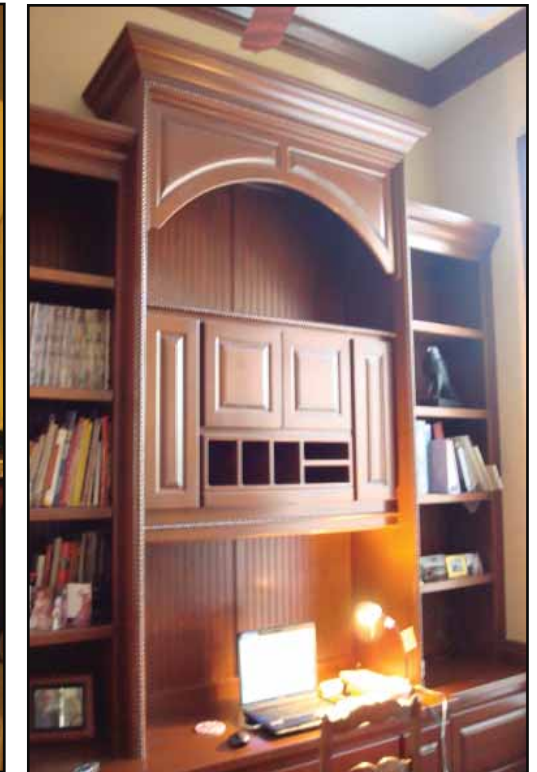
Features  
~ Custom built home by Hillcrest  
~ New Circular Paver driveway  
~ Oversized 1/2 acre lot on Lake Irish  
~ 3 car side entry garage  
~ Downstairs main living with views of the lake from almost every room  
~ Upstairs 4th bedroom & a Bonus room with full bath  
~ Exquisite built-in cabinetry  
~ Gourmet kitchen with granite counter tops, 42" cabinets, center island  
~ Oversized screened and paved lanai with pool and spa  
~ Irrigation system  
~ Spacious Master Suite and luxurious bath with separate shower



Formal Living Room



Master Bath



Den



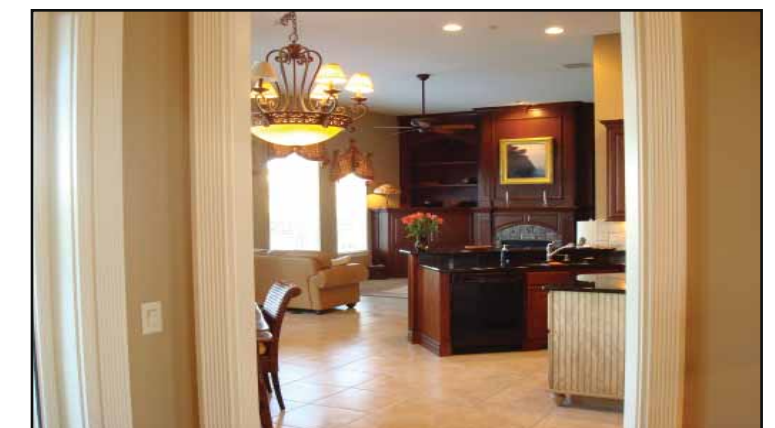
Gourmet Kitchen



View from Stairs - Foyer



Family Room



View into Family Room